

A close-up photograph of a pink lotus flower in full bloom, surrounded by large, dark green lily pads. The water is dark and reflective, creating a serene and natural atmosphere. The lighting highlights the delicate petals of the flower and the texture of the leaves.

Where *ancient* wisdom meets *modern* wellbeing

Natural, high-performance ingredient
blends inspired by Ayurveda.

Yurvani



Innovation rooted in wisdom

Ayurvedic cosmetic ingredients

Unlock the secrets of Ayurveda - the ancient Indian science behind a new generation of natural, high-performance beauty products.

Our innovative ingredient blends combine years of wisdom with modern studies to deliver proven results. Each plant-powered complex features time-tested botanicals, rooted in a rich heritage of classical Ayurvedic formulations.

Welcome to the future of wellness, reimagined.



*Natural, vegan
& zero waste
blends*

Sustainable sourcing

Beyond product performance, we're committed to social responsibility and sustainability. In addition to embracing a zero-waste philosophy by reusing any leftovers from ingredient production, we source our materials from small-scale Indian farmers and women-led self-help groups, empowering local communities.

EcliptaRoots

FOR HAIR GROWTH & HAIR-FALL REDUCTION

Embrace fuller, thicker, healthier-looking hair with EcliptaRoots. This high-performance botanical blend features superstar ingredient Eclipta alba, known for its hair growth potential. Combined with 5 time-tested Ayurvedic plants, EcliptaRoots tackles hair fall, boosts shine and protects against oxidative stress.



ASHWAG
ANDHA



AMLA / INDIAN
GOOSEBERRY



ECLIPTA
ALBA



CENTELLA
ASIATICA



ACACIA
CONCINNA

Starring *Eclipta Alba*

Eclipta alba (Ayurvedic name: Bhringraj) is a flowering plant that has been used in Ayurveda for centuries. It is known for stimulating hair growth, preventing hair loss, delaying graying, and increasing hair thickness.

Functions & Benefits

- Promotes hair growth
- Proven to prevent hair fall by 66%, promoting fuller hair*
- 39% improvement in hair count*
- Improves hair shine by 37%*
- Protects against oxidative stress due to antioxidant properties

Specifications

INCI: Withania Somnifera, Phyllanthus Emblica, Acacia Concinna, Centella Asiatica, Eclipta Alba

Application: Shampoos, conditioners, hair masks, hair styling treatments, waterless formulations

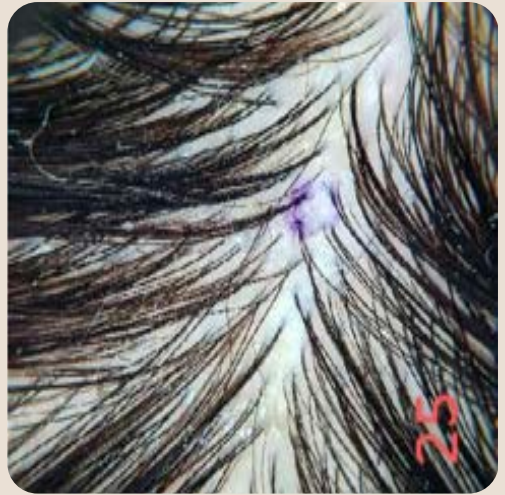
Use level: 1.0 - 2.5%

+66% Reduction in
HAIR FALL*

DAY 0



DAY 56



+39% Increase in
HAIR COUNT*

*Results in just 8 weeks
Tested in-vivo with a serum & shampoo containing
1% EcliptaRoots

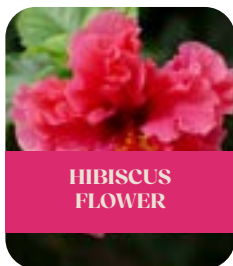


Scan for more
study data!

HibiHair

FOR DANDRUFF CONTROL & HAIR VOLUME

Formulating for flake-free locks? HibiHair combines the natural potency of 4 Ayurvedic herbs to help combat dandruff and soothe irritation while nourishing the scalp for a healthy foundation. HibiHair has also been proven to boost hair volume over time, making it ideal for fine, limp, and lifeless hair.



Starring *Hibiscus*

Hibiscus flower (Ayurvedic name: Japa kusum) is a prized Ayurvedic botanical known for nourishing the scalp. Studies suggest its potential in providing a natural defence against microbial scalp issues.

Functions & Benefits

- 47% dandruff reduction in just eight weeks*
- Nourishes & supports scalp health
- Improves hair volume by 40%*
- Promotes hair growth
- Protects against oxidative stress due to antioxidant properties

Specifications

INCI: Azadirachta Indica, Centella Asiatica, Eclipta Alba, Hibiscus Rosa-Sinensis

Application: Shampoos, conditioners, hair masks, waterless formulations

Use level: 1.0 - 2.5%

+47% DANDRUFF
Reduction*

DAY 0

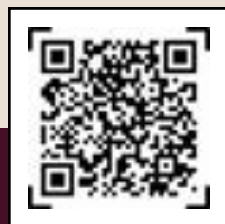


DAY 56



+40% Improvement in
HAIR VOLUME*

*Results in just 8 weeks (Dermatologist assessment)
Tested in-vivo with a serum & shampoo containing
1% HibiHair



Scan for more
study data!

RevitaLight FOR FIRMER, YOUTHFUL-LOOKING SKIN

Turn back the clock with RevitaLight - a powerful blend that combines Ashwagandha and Indian lotus flower to create a remarkable anti-ageing active. Clinically proven to boost skin elasticity and smooth out fine lines and wrinkles for visibly firmer, younger-looking skin.



ASHWAGANDHA



INDIAN LOTUS

Starring *Ashwagandha*

Ashwagandha is an adaptogenic herb due to its stress-reducing benefits. Studies suggest that Ashwagandha boosts collagen formation and stimulates the production of hyaluronan to help keep skin hydrated.

Functions & Benefits

- Smooths fine lines & wrinkles
- Improves skin elasticity by 50% (cheekbone area) and 35% (crows feet)*
- Skin appears 48% firmer and 46% smoother**
- Moisturises for soft, supple skin

Specifications

INCI: Withania Somnifera, Nelumbo Nucifera

Application: Cream & lotions, colour cosmetics, masks, serums, waterless formulations

Use level: 1.0 - 2.0%

+50% Increase in SKIN
ELASTICITY*

DAY 0



DAY 60



+44% WRINKLE
Reduction**

*By day 60 of product usage based on

**Dermatologist assessment (D60)

Tested with a face cream
containing 1% RevitaLight



Scan for more
study data!

KayaKlay

FOR REJUVENATED SKIN

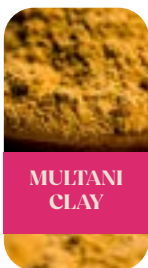
Calling on 6 Ayurvedic botanicals, all famed for various skin health benefits, KayaKlay is a unique off-the-shelf ingredient blend that detoxifies the skin, helping to remove impurities and pollutants. When used over time, it boasts skin-smoothing and moisturisation benefits while improving skin tone and firmness.



ASHWAG-
ANDHA



CENTELLA
ASIATICA



MULTANI
CLAY



INDIAN
LILAC



MUNG
BEANS



LICORICE
ROOT

Starring *Multani Clay*

Multani clay (Ayurvedic name: Mrittika) is known for its skin-soothing and calming properties. It helps to absorb excess sebum and remove dead skin cells to reveal radiant skin.

Functions & Benefits

- Detoxifies & rejuvenates skin
- Skin appears 46% smoother**
- Boosts skin moisturisation and skin firmness over time**
- Helps keep skin hydrated
- Promotes an even skin tone

Specifications

INCI: Fullers Earth, Azadirachta Indica, Centella Asiatica, Glycyrrhiza Glabra, Vigna Radiata, Withania Somnifera

Application: Masks, body treatments, waterless formulations

Use level: 1.0 - 2.0%

+40% Increase in SKIN
MOISTURISATION*

DAY 0



DAY 60



+93% Agree that SKIN
FEELS SMOOTHER*†

*By day 60 of product usage

**Dermatologist assessment (D60)

†Based on subjects' self-assessment

Tested with a face cream containing 1% KayaKlay



**Scan for more
study data!**

ReCocovive

FOR NOURISHED, HYDRATED SKIN

Starring sustainably sourced coconut and moringa, this potent pairing works wonders to soothe and hydrate, while shielding the skin from environmental stressors. Moringa leaf boasts a wealth of flavonoids and phenolics, making it a powerful antioxidant. Coconut milk extract, renowned for its detoxifying and hydrating properties, joins forces with moringa to restore the skin's natural balance and promote overall skin health.



Functions & Benefits

- Nourishes & hydrates
- Helps protect skin from oxidative stress due to potent antioxidant properties
- Fosters skin health

Specifications

INCI: Cocos Nucifera, Moringa Oleifera

Application: Creams & lotions, colour cosmetics, masks, serums, waterless formulations

Use level: 1.0 - 2.0%

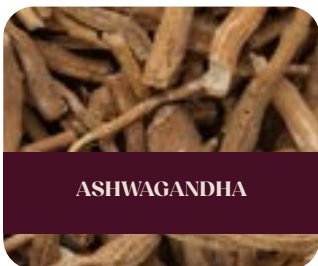


Scan for more
details!

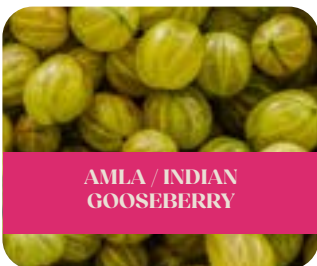
GlowBack

FOR IMPROVED SKIN TONE & BRIGHTNESS

Reignite skin's radiance with GlowBack. Formulated with 3 legendary Ayurvedic ingredients, this powerhouse active promotes a brighter, more even-toned complexion while visibly reducing the appearance of dark spots and hyperpigmentation. It boosts skin moisturisation and is a potent antioxidant.



ASHWAGANDHA



AMLA / INDIAN
GOOSEBERRY



LICORICE
ROOT

Starring *Indian Gooseberry*

Also known as Amla or Amalaki, these yellow-green berries are a rich source of vitamin C. Studies also reveal that Amla offers potent anti-hyperpigmentation and hydration properties.

Functions & Benefits

- Boosts skin brightness by 18%*
- Promotes even skin tone
- Reduces the appearance of dark spots & hyperpigmentation
- 46% increase in moisturisation*
- Potent antioxidant
- Ideal for dull, tired & dry skin

Specifications

INCI: Glycyrrhiza Glabra, Phyllanthus Emblica, Withania Somnifera

Application: Cream & lotions, colour cosmetics, masks, serums, waterless formulations

Use level: 1.0 - 2.5%

+18% INCREASE in skin
BRIGHTNESS*

DAY 0



DAY 60



+71% Agree that skin tone
is MORE EVEN*†



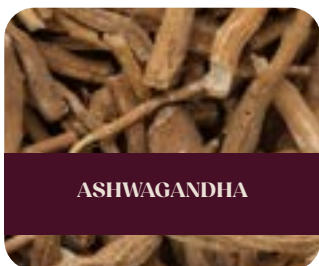
*By day 60 of product usage
†Based on subjects' self-assessment
Tested with a face cream
containing 1% GlowBack

Scan for more
study data!

PeptiProtect

FOR SMOOTHER, HEALTHY-LOOKING SKIN

Meet PeptiProtect - the natural defence squad! Harnessing peptides and phytonutrients from Mung beans, coupled with adaptogenic Ashwagandha and Sweet potato, this versatile trio works to hydrate skin, fight free radicals and improve skin texture for smoother, healthier skin.



ASHWAGANDHA



MUNG BEANS



SWEET POTATO

Starring *Mung Beans*

Mung beans (Ayurvedic name: Moong dal) are an excellent source of phyto-proteins, polysaccharides, polyphenols and peptides which play a significant role in achieving smooth, hydrated, nourished skin.

Functions & Benefits

- Helps improve skin texture
- Skin appears 43% smoother*
- Moisturises skin
- Protects against oxidative stress
- Natural source of peptides & phytonutrients

Specifications

INCI: Withania Somnifera, Vigna Radiata, Ipomoea Batatas

Application: Creams & lotions, colour cosmetics, masks & serums, waterless formulations

Use level: 1.0 - 2.5%

+86% Improved SKIN
TEXTURE*†

DAY 0



DAY 60



+43% SMOOTHER
appearance of skin*



*By day 60 of product usage based on
Dermatologist assessment

†Based on subjects' self-assessment

Tested with a face cream containing 1% PeptiProtect

**Scan for more
study data!**

BabchiBronze

FOR AN INSTANT NATURAL TAN

Achieve sun-kissed skin with BabchiBronze. Powered by Ayurvedic ingredients including Indian madder - a rich source of natural tannins - this botanical blend delivers instant tanning effects at low use levels. It can be formulated into daily use products.



TERMINALIA
CHEBULA



BABCHI / PSORALEA
CORYLIFOLIA



INDIAN
MADDER

Starring *Psoralea Corylifolia*

Also known as Babchi, this herb has a long history of medicinal use. It's known to promote melanin synthesis and is the source of the popular skincare ingredient bakuchiol which has gained recognition for its retinol-like benefits.

Functions & Benefits

- Source of natural tannins
- Performs comparably to the market leader with 10% DHA
- Protects against oxidative stress
- Promotes anti-ageing benefits

Specifications

INCI: Psoralea Corylifolia, Terminalia Chebula, Rubia Cordifolia

Application: Creams, lotions, serums, waterless formulations

Use level: 1.0 - 2.5%

+96% Agree it has a
TANNING EFFECT*
+100% like the product
ODOUR & FEEL*



*Based on subjects' self-assessment
Tested with 1%, 1.5% & 2.5% BabchiBronze
(14-day clinical study)

Scan for more
study data!

“Ayurveda teaches us
to live in harmony with
ourselves, others, and the
environment to achieve
true wellbeing”

About us

Yurvani is a UK-based ingredient manufacturer specialising in Ayurvedic blends. We help brands unlock the secrets of Ayurveda - the ancient Indian science behind a new generation of natural, high-performance beauty products.

Looking for something specific?
We also develop custom blends.
Get in touch to find out more!

Yurvani

Get in touch

 @yurvani_uk

 @yurvani

www.yurvani.com
moon@ascot1.com

